

Chrome Education license overview

In a business setting, **70 to 1** is the ideal ratio of users to IT professionals. We know in a school district with thousands of students, that is just not possible. That's why we offer Chrome Education license to allow you to manage any number of devices from a simple cloud-based console.



The easiest devices to set up and manage

Update 100 or 100,000 devices without touching a single one



Manage devices easily

No other device management is cloud-based and so simple



24/7 support

When you need help, we are there—every single time



200+ customizable policies

Keep 95% of defaults, but adjust to give the exact experience you want



Chromebook management license

1-time, \$30 MSRP that lasts the life of the device

Chromebooks by the numbers

#1 selling device 

in U.S., Canada, Sweden, New Zealand, and Netherlands K-12 schools

30,000+ 

Chromebooks are activated in EDU every school day

30 million+ 

students worldwide use Chromebooks

13+ OEMs 

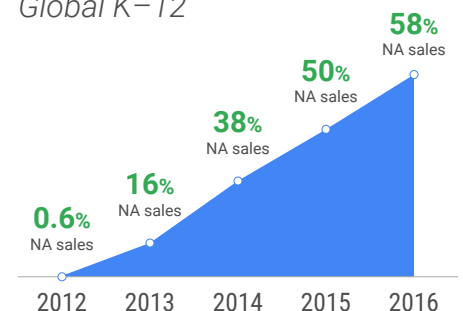
Acer, Asus, Dell, HP, Lenovo, and more

"I would say that we are **saving more than 70% of our time** on managing the devices. If we were going to do this with another device, we'd have to almost double our staff...[W]e have all of these devices now, but we don't hear people talking about managing them."

*IDC White Paper,
The Economic Value of Chromebooks for Educational Institutions*

Chromebook sales growth

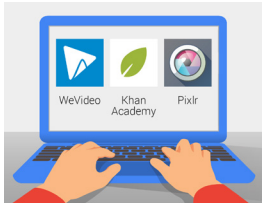
Global K-12





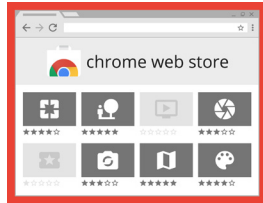
User settings

Create a personalized experience for users on each and every device in your domain



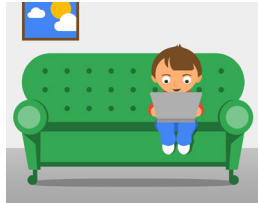
Push apps and extensions

Lead students right to the apps and extensions that they need the most



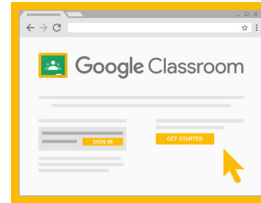
Customize the Chrome Web Store

Create an instance of the Chrome Web Store specific to your school's domain



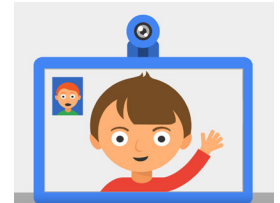
Route through a proxy

Specifies how your devices connect to the internet in order to track and filter activity



Customize the user experience

Automatically load websites on startup, add custom bookmarks, and block distractions



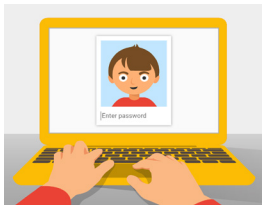
Enable/disable hardware

Control whether users can access webcams, speakers, external hard drives, or printers



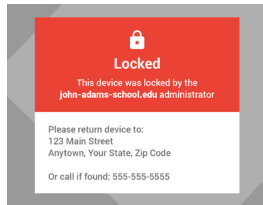
Device settings

Give a custom, school-wide experience on each and every device, no matter who signs in



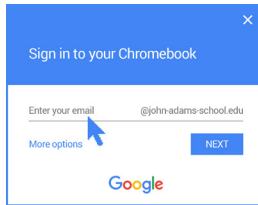
Specify who can sign in

Ensure educational use by disabling guest mode and restricting sign in to your domain



Enrollment and access

Prevents anyone from removing a device from your domain (no matter how sneaky they are)



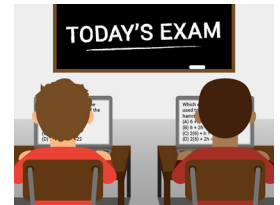
Autocomplete domain

Speed up the sign in process—great for touch screen devices and younger students



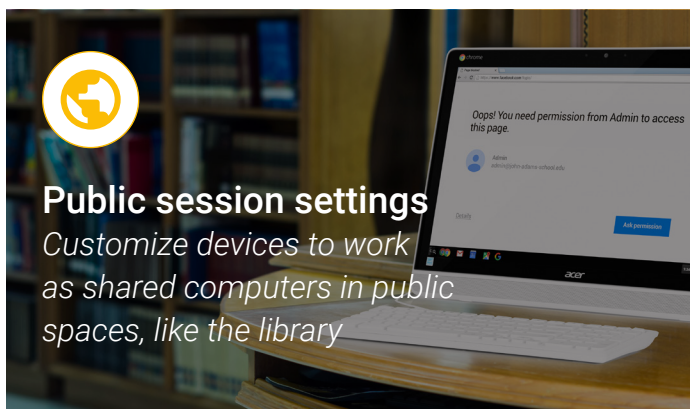
Enable cloud printing

Grant access to Cloud Print, allowing devices to use any printer on your network



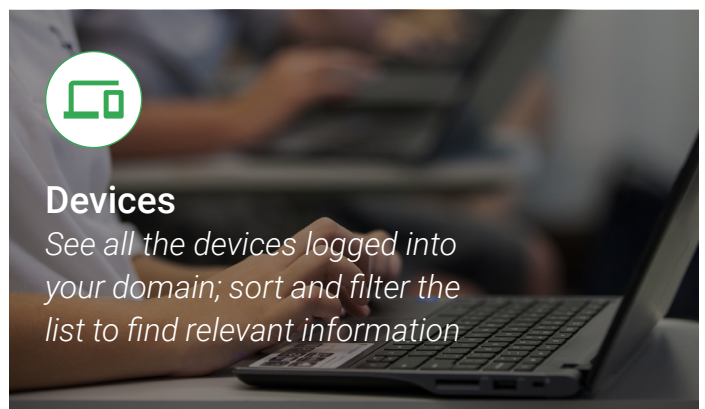
Push out kiosk apps

Lock devices into a secure environment for testing or set up digital signage



Public session settings

Customize devices to work as shared computers in public spaces, like the library



Devices

See all the devices logged into your domain; sort and filter the list to find relevant information